



### V8T214

## 14-Pc SAE Angle Wrench Set

- 30° & 60° Angles Allow Use in 4 Different Positions
- **Inc:** 3/8", 7/16", 1/2", 9/16", 5/8", 11/16", 3/4", 13/16", 7/8", 15/16", 1", 1 1/16", 1 1/8" & 1 1/4"

USER \$141.55 SRP **\$96.07**

## Crowfoot Wrench Sets

- Drop-Forged Alloy-Steel, Fully Polished

### V8T7711

## 11-Pc 3/8" Dr SAE

- **Includes:** 3/8", 7/16", 1/2", 9/16", 5/8", 11/16", 3/4", 13/16", 7/8", 15/16" & 1"



USER \$67.17 SRP **\$45.56**



### V8T7814

## 14-Pc 1/2" Dr Jumbo SAE

- **Includes:** 1 1/16", 1 1/8", 1 3/16", 1 1/4", 1 5/16", 1 3/8", 1 7/16", 1 1/2", 1 5/8", 1 11/16", 1 3/4", 1 13/16", 1 7/8" & 2"

USER \$192.81 SRP **\$132.25**

## Super Thin Wrenches

### V8T8308 8-Pc SAE

- **Inc:** 3/8"x7/16", 1/2"x9/16", 5/8"x11/16", 3/4"x13/16", 7/8"x15/16", 1"x17/16", 1 1/8"x1 1/4", 1 3/16"x1 5/16"



USER \$83.98 SRP **\$56.96**

### V8T629 Adjustable Wrench

- Comes with 2 Quick-Change Jaws
- Jaw A Opens: 9/16" to 1 3/16"
- Jaw B Opens: 1 1/16" to 2 1/16"
- Jaw & Handle Thickness: .25"



USER \$54.70 SRP **\$37.11**

## V8T9215 15-Pc Jumbo SAE Service Wrench Set

- For use in Confined Spaces • Drop-Forged Alloy Steel
- **Includes:** 3/4", 13/16", 7/8", 15/16", 1", 1 1/16", 1 1/8", 1 3/16", 1 1/4", 1 5/16", 1 3/8", 1 7/16", 1 1/2", 1 9/16", 1 5/8"



USER \$252.50 SRP **\$171.21**

### V8T3803

## Clip-On Magnetic Dish

- Made of Strong Material
- Clips on Belt or Pocket • 3 Rare Earth Magnets



USER \$24.33 SRP **\$16.51**

## SP91000 Fastrax Camb/Cas Gauge

- Portable, Hands-Free Alignment
- Displays Camber +/-4° / Caster -4° to +12°
- **Includes** Gauge & Wheel Mount (Fits most Wheels from 13" to 17")



USER \$275.31 SRP **\$212.53**

## SP86370 GM Van Cas/Cam Plate

- Front Adjustment Range: Camber/Caster +/- 1.50°
- Installation Time: 0.3 Hr/Side • Required: 1 Kit per Wheel
- Designed to be Adjusted with a 3/8" Drive Breaker Bar



USER \$7.94 SRP **\$6.12**

## SP72210 1/4° Rear Half Shim for Chrysler

- Adjusts Camber or Toe



LTD QTY

SRP **\$20.12**

## Rear Toe Adjustment Tools

### SP87560 Honda, 24MM

- Late Model Hondas, also Acura ILX or Rear Camber Adjustment on Mini Coopers

USER \$44.25 SRP **\$34.16**

Simply use Your 1/2" Drive Socket Wrench to Drive Change



### SP87565 BMW

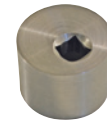
- BMW 3-Series (E46) & Z4 Models

USER \$79.89 SRP **\$61.67**

### SP87566 Mini

- All MINI Vehicles

USER \$58.14 SRP **\$44.88**



## SP88810 W-Body Clamp Assembly

- Remove or Install the Auxiliary Spring for Rear Spring or Strut Service



LTD QTY

SRP **\$97.74**

## SP73167 1" Hi Perf Lugnut Socket, CR-MO

- 1/2" Sq Drive, Deep & Thin Walled Impact



USER \$15.81 SRP **\$12.21**

LTD QTY