

Ken-Tool® Bench Vises

INDUSTRIAL DUTY

- 360° Swivel Base • Built-In Anvils
- Machined Base Plate for Smooth Swivel
- Heavy-Duty Jaw Beam Covers Screw
- "V" Notched, Replaceable/Reversible Jaws made of Carbon Steel & Heat-Treated, Diamond Cut on 1 Side, Smooth on the other
- Gear-Type Locking System with Double-Lock Down Bolts



KT63004 USER \$342.58 SRP **\$265.05**

4" Jaw Width, 5" Jaw Opening, 2.9" Throat Depth, 1/2" - 2" Pipe Jaw Capacity

KT63005 USER \$390.21 SRP **\$301.89**

5" Jaw Width, 6" Jaw Opening, 3.25" Throat Depth, 1/2" - 3" Pipe Jaw Capacity

KT63006 USER \$587.55 SRP **\$454.58**

6" Jaw Width, 8" Jaw Opening, 3.6" Throat Depth, 3/4" - 3.5" Pipe Jaw Capacity

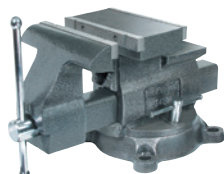
KT63008 USER \$768.98 SRP **\$594.95**

8" Jaw Width, 9" Jaw Opening, 4.5" Throat Depth, 3/4" - 4" Pipe Jaw Capacity

PROFESSIONAL

Reversible Mechanic's

- 2 Built-In Anvils
- Remove Jaw from Front of Base, Swivel Base 180°, then Re-Insert Jaw



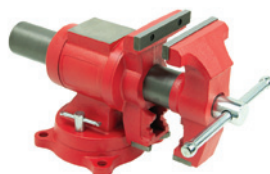
KT64800 (KT4800) 8"

- 11-14" Jaw Opening, 4 7/8" Throat Depth

USER \$747.16 SRP **\$491.95**

KT65005 5" Multipurpose

- 360° Swivel Base • Built-In Anvils
- 5" Jaw Opening, 2 1/2" Throat Depth



USER \$323.11 SRP **\$249.98**

KT39743

MacPherson Strut Vise/Chain Wrench/Rack & Pinion Vise



LTD QTY

- Easily Mounts to any Work Bench

USER \$111.05 SRP **\$98.25**

C-CLAMPS

KT39604 (KT-4)

4" Jaw Opening, 2 1/16" Depth, 5/8" Screw



USER \$32.51 SRP **\$25.72**

KT39606 (KT-6) USER \$47.82 SRP **\$37.82**

6" Jaw Opening, 2 3/4" Depth, 5/8" Screw Diameter

KT39608 (KT-8) USER \$60.16 SRP **\$47.58**

8" Jaw Opening, 3 1/4" Depth, 3/4" Screw Diameter

KT42493 (143K)

BRINK & COTTON® Carriage

3" Jaw Opening, 2" Depth, 7/16" Screw Diameter

LTD QTY

SRP **\$6.77**

KT29980 reCore® TPMS Sensor Saver System



- Includes: 12 TPMS reCore Sensor Savers, TPMS Valve Core Torque Tool (Preset at 4 in-lbs), High Speed Dual Cutter Countersink Drill Bit, Precision Tap, Tap Holder with T-Handle, Bottle Ken-Lok™ Thread Sealant, Instructions & Case

USER \$297.27 SRP **\$235.11**

KT29999

VALVECAPPER® Pro Cap & Core Tool

- Designed for Use on Metal & Plastic Valve Caps • 11 3/4"

USER \$16.97 SRP **\$13.40**

AUTO & TRUCK TIRE TOOLS

KT20145

5 11/16" Air-Flexx

Valve Extension, Inner Dual Tires



USER \$15.29 SRP **\$12.11**

KT33220 (T20A)

30" Curved Tire Mount/Demount Spoon



USER \$50.94 SRP **\$40.30**

Tubeless Tire Irons

KT34644 (T45A-2000K™) 37"

USER \$124.16 SRP **\$98.21**

KT34645 (T45A®) 37" Super Duty

USER \$107.98 SRP **\$70.09**

Use "C" Bar with the "B" Extension Bar for easier use on Large, Wide-Base Truck Tires



KT34749 USER \$76.80 SRP **\$60.74**

(T46C) 22" Offset Mount "C" Bar

KT34849 USER \$312.00 SRP **\$246.75**

(T47C) 27" Offset Mount "C" Bar

KT35310 (T32)

Rubber Mallet, 2Lb

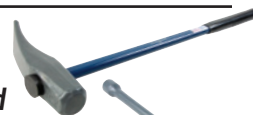
- 17" Handle Length



USER \$44.04 SRP **\$34.86**

KT35429 (TG11E)

Duck-Billed Bead Breaking Wedge, 32" Fiberglass Handled



USER \$224.17 SRP **\$166.58**

4-Way Lug Wrenches

KT35595 USER \$177.88 SRP **\$140.68**

(TC95) Heavy Duty - Truck 1 1/2", 1 3/16" Square Sockets; 27 1/2"L

KT35658 LTD QTY SRP **\$20.95**

(T59A) Standard - Passenger 3/4", 1 3/16", 7/8", 1 1/2" Sq Service Arm; 18"L

KT35620 USER \$36.02 SRP **\$28.46**

(T9520) Economy - Passenger 3/4", 1 3/16", 7/8", 17mm; 20"L