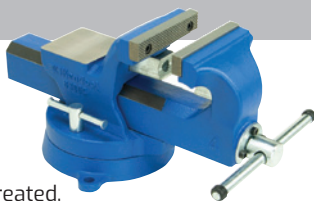


# Ken-Tool® Bench Vises

## INDUSTRIAL DUTY

- 360° Swivel Base • Built-In Anvils
- Machined Base Plate for Smooth Swivel
- Heavy-Duty Jaw Beam Covers Screw
- "V" Notched, Replaceable/Reversible Jaws made of Carbon Steel & Heat-Treated, Diamond Cut on 1 Side, Smooth on the other
- Gear-Type Locking System with Double-Lock Down Bolts



**KT63004** USER \$342.58 SRP **\$184.19**

4" Jaw Width, 5" Jaw Opening, 2.9" Throat Depth, 1/2" - 2" Pipe Jaw Capacity

**KT63005** USER \$390.21 SRP **\$256.21**

5" Jaw Width, 6" Jaw Opening, 3.25" Throat Depth, 1/2" - 3" Pipe Jaw Capacity

**KT63006** USER \$587.55 SRP **\$385.18**

6" Jaw Width, 8" Jaw Opening, 3.6" Throat Depth, 3/4" - 3.5" Pipe Jaw Capacity

**KT63008** USER \$768.98 SRP **\$421.04**

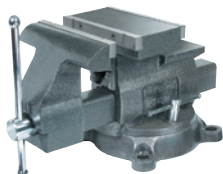
8" Jaw Width, 9" Jaw Opening, 4.5" Throat Depth, 3/4" - 4" Pipe Jaw Capacity

## PROFESSIONAL

**KT64800** (KT4800)

8" Reversible Mechanic's

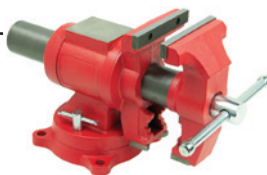
- 11-14" Jaw Opening, 4 7/8" Throat Depth
- 2 Built-In Anvils
- Remove Jaw from Front of Base, Swivel Base 180°, then Re-Insert Jaw



USER \$747.16 SRP **\$491.95**

**KT65005** 5" Multipurpose

- 360° Swivel Base • Built-In Anvils
- 5" Jaw Opening, 2 1/2" Throat Depth



USER \$323.11 SRP **\$212.70**

**KT39743**

MacPherson Strut  
Vise/Chain Wrench/  
Rack & Pinion Vise

- Easily Mounts to any Work Bench



LTD QTY

USER \$111.05 SRP **\$101.42**

## C-CLAMPS

**KT42493** (143K)

SRP **\$6.77**

BRINK & COTTON® Carriage

3" Jaw Opening, 2" Depth, 7/16" Screw Diameter

LTD QTY

**KT39604** (KT-4)

4" Jaw Opening, 2 1/16" Depth, 5/8" Screw Diameter

USER \$32.51 SRP **\$25.72**

**KT39606** (KT-6)

USER \$47.82 SRP **\$37.82**

6" Jaw Opening, 2 3/4" Depth, 5/8" Screw Diameter

**KT39608** (KT-8)

USER \$60.16 SRP **\$47.58**

8" Jaw Opening, 3 1/4" Depth, 3/4" Screw Diameter



## KT29980 reCore® TPMS Sensor Saver System

- Includes: 12 TPMS reCore Sensor Savers, TPMS Valve Core Torque Tool (Preset at 4 IN-LBS), High Speed Dual Cutter Countersink Drill Bit, Precision Tap, Tap Holder with T-Handle, Bottle Ken-Lok™ Thread Sealant, Instructions & Case



USER \$297.27 SRP **\$235.11**

## KT35440 Blue Cobra® Truck Tire Demount Tool

- Demount without Lifting Entire Wheel & Tire Off the Ground
- 22.5" & 24.5" Tubeless Truck Tire, Up to 13" Wide Wheel
- Solid Steel Cobra Head is Press-Fit into Steel Handle
- Aluminum Bead Support to Grab Top Bead of Super Single & Super Wide Tires
- 2 Replaceable Heavy Duty Nylon Rollers • 54" Long, 22 LBS



USER \$610.40 SRP **\$482.74**

## KT29999 VALVECAPPER® Pro Cap & Core Tool

- Designed for Use on Metal & Plastic Valve Caps • 1 13/16"



USER \$16.46 SRP **\$13.02**

## AUTO & TRUCK TIRE TOOLS

### KT20145 5 11/16" Air-Flexx Valve Extension, Inner Dual Tires

USER \$15.29 SRP **\$12.09**



### KT33220 (T20A) 30" Curved Tire Mount/Demount Spoon

USER \$48.90 SRP **\$38.67**



### 37" Tubeless Tire Irons

**KT34644** (T45A-2000K™) USER \$119.19 SRP **\$94.26**

**KT34645** (T45A®) USER \$103.66 SRP **\$81.98**

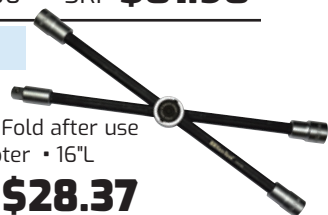


## 4-Way Lug Wrenches

**KT35636** Stow & Go™ HD

- Center Push Button allows Wrench to Fold after use
- 17, 19 & 21mm Sockets • 1/2" Sq Dr Adapter • 16"L

USER \$35.88 SRP **\$28.37**



**KT35595** (TC95) Heavy Duty - Truck 1 1/2", 1 3/16" Square Sockets; 27 1/2"L

**KT35658** (T59A) Standard - Passenger 3/4", 13/16", 7/8", 1/2" Sq Service Arm; 18"L

**KT35620** (T9520) Economy - Passenger 3/4", 13/16", 7/8", 17MM; 20"L